

AGENDA

**Kiamichi Technology Center
Board of Education
Regular Meeting
KTC – Administrative Office
1004 Highway 2 North
Wilburton, OK 74578
June 29, 2018
12:15 P.M.**

The Board can discuss, make motions and vote upon any matter appearing on the Agenda. Such motions and votes may be to adopt, reject, modify, table, reaffirm, rescind, or take no action on any Agenda item. The meeting will be conducted by the President of the Board as the presiding officer. Any agenda item containing multiple matters may be severed for separate consideration at the request of any Board member:

- A. ROLL CALL:**
- B. QUORUM DECLARED TO BE PRESENT & MEETING CALLED TO ORDER:**
- C. RECOGNITION OF GUESTS, SUBMITTING PROPER REQUESTS PURSUANT TO KIAMICHI TECHNOLOGY CENTER POLICY 6.5:**
- D. RECOMMENDATION, CONSIDERATION AND VOTE TO ACCEPT THE RESIGNATION OF JOY CULBREATH FROM THE KTC BOARD OF EDUCATION.**
- E. CONSENT AGENDA: All of the following items, which concern reports and items of a routine nature normally approved at Board Meetings, will be approved by one vote unless any Board Member desires to have a separate vote on any or all of these items. The Consent Agenda consists of discussion, consideration and vote on each items 1 through 6.**
 - 1. Approval of Minutes.
June 12, 2018 Special Meeting**

2. **Approval of Resolution No. 6/29/2018-1 Activity Fund Account Reports and Transfer of Funds and Approval of Activity Fund Chart of Accounts – FY 2018-2019.**
3. **Approval of Short-Term Instructors and Part-Time Employees to Work at All Campuses – FY 2018-2019. See Schedule “A” of the Agenda.**
4. **Approval to Remove Items from Inventory at the Atoka Campus, the Durant Campus, the McAlester Campus and the Poteau Campus. (Copies of These Lists Are Available on the District Website, at the Office of the Superintendent and at the Meeting.)**
5. **Approval of FY 2017-2018 General Fund Encumbrance Nos. 182369 Through the Latest Numbered Encumbrance Presented at the Time of This Meeting for Accounts Payable, Payroll, and Change Order for FY 2017-2018 Which Was Over \$500.00 and 20%:**

<u>P.O. #</u>	<u>Vendor</u>	<u>Increase</u>	<u>Total</u>
182330	Oklahoma SkillsUSA	\$1,617.80	\$10,769.00

6. **Approval of FY 2018-2019 General Fund Encumbrance Nos. 190000 Through the Latest Numbered Encumbrance Presented at the Time of This Meeting for Accounts Payable, and Building Fund Encumbrance Nos. 1921000 Through the Latest Numbered Encumbrance Presented at the Time of This Meeting for Accounts Payable.**

F. Motion, Second and Roll Call Vote to Approve the Consent Agenda, Items 1 through 6.

G. ACTION TOPICS:

7. **Recommendation, Consideration and Vote to Approve Shelley D. Free, Superintendent, as Purchasing Agent and All Full-Time KTC Employees as Authorized Receiving Agents in Compliance with KTC Equipment/Inventory Control Procedures – FY 2018-2019.**

8. Recommendation, Consideration and Vote to Approve the Employment of Temporary Support Employees at Each Campus and the Wilburton Office for the Month of July, 2018, at a Combined Rate of \$15.00 Per Hour, Not to Exceed 40 Hours Per Week Aggregate.

<u>Name</u>	<u>Primary Duty</u>	<u>Campus</u>
Stanley, Erma	Summer Worker, July 2018	Durant
Ainsworth, Braydon	Summer Worker, July 2018	Hugo
Boyett, Tyler	Summer Worker, July 2018	Hugo
Popejoy, Tyler	Summer Worker, July 2018	Hugo
Jeanes, Joshua	Summer Worker, July 2018	Idabel
Mayes, Cody	Summer Worker, July 2018	Idabel
Buller, Sierra	Summer Worker, July 2018	McAlester
Williams, Daniel	Summer Worker, July 2018	McAlester
Brown, Countri	Summer Worker, July 2018	Poteau/Spiro
Culwell, Jaxon	Summer Worker, July 2018	Poteau/Spiro
Hall, Malorie	Summer Worker, July 2018	Poteau/Spiro
Hardaway, Kyson	Summer Worker, July 2018	Poteau/Spiro
Thomas, Raegan	Summer Worker, July 2018	Poteau/Spiro
Walker, Jared	Summer Worker, July 2018	Poteau/Spiro
Raley, Delbert	Summer Worker, July 2018	Stigler
Smith, Devin	Summer Worker, July 2018	Stigler
Grogan, Kalyn	Summer Worker, July 2018	Wilburton
Howell, Jacob	Summer Worker, July 2018	Wilburton

9. Recommendation, Consideration and Vote to Approve the Authorization of Personnel to be in Charge and/or to Sign Documents in the Absence of the Director/Assistant Director at Each Respective Campus, as Listed on Schedule “B” of the Agenda – FY 2018-2019.

10. Recommendation, Consideration and Vote to Approve Personnel at Each Respective Campus and the Wilburton Administrative Office as Designated Signature Authorities on Bank Accounts as Listed on Schedule “C” of the Agenda – FY 2018-2019.

11. Recommendation, Consideration and Vote to Approve Revisions to Faculty and Staff and Student Handbooks – FY 2018-2019.

- National Technical Honor Society
 - School Calendars
12. **Recommendation, Consideration and Vote to Approve Keystone/INSURICA/OSIG as the Insurance Carrier for the Property and Casualty Insurance – FY 2018-2019.**
 13. **Recommendation, Consideration and Vote to Adopt/Revise the Following Job Descriptions**
 - Communications and Marketing Coordinator
 - Performance Improvement Specialist
 14. **Recommendation, Consideration and Vote to Approve Revision to Professional Staff Employee Contract – FY 2018-2019.**
 15. **Proposed Executive Session for the Purpose of Discussing the Resignation, Retirement, Employment/Appointment, Reassignment and/or Transfer of Personnel to the Positions Listed Below Including Discussions of Information, the Disclosure of Which Would Violate Confidentiality Requirements of State and/or Federal Law, as Authorized by Title 25, Okla. Stats. Section 307 (B) (1) and (B) (7).**

RESIGNATION
RYAN DUNN, Criminal Justice Instructor, Idabel Campus

EMPLOYMENT/APPOINTMENT, RE-ASSIGNMENT AND/OR TRANSFER
_____, TANF Instructor, Idabel Campus (12-Month Grant Teacher Contract)
_____, Construction Technology Instructor, Stigler Campus (10-Month Temporary Teacher Contract)

**EMPLOYMENT/APPOINTMENT, RE-ASSIGNMENT
AND/OR TRANSFER (Continued)**

_____, Custodial/Maintenance - Evening, Stigler Campus
(12-Month Support Contract)

_____, Practical Nursing Instructor, Hugo Campus
(11-Month Adult Ed. Instructor Contract)

_____, Industrial Coordinator, Durant Campus (12-Month
Professional Staff Contract)

**SADIE WATKINS, Transfer from Secretary, Poteau Campus to
Secretary, Durant Campus**

**LINDSEY SPRADLEY, Transfer from Teaching Assistant, Poteau
Campus to Secretary, Poteau Campus (12-Month Support Contract)**

**RAYMOND WILSON, Assistant Director, McAlester Campus – Addendum
to Contract for Additional Job Duties**

**CHOCTAW CAREER DEVELOPMENT PERSONNEL
FY 2018-2019**

NAME	POSITION
David L. Billy	Career Counselor
Kelly R. Brame	Counselor/Part-Time Director and Evaluator PATHS Program
Jane E. Buffington	Career Counselor
Robin Counce	Director
Tracy D. Lick	Career Counselor
Bryan H. Martin	Teacher
Cynthia M. Martin	Career Counselor
Rhonda L. Mize	Academic Coordinator
Martha J. Rorie	Job Placement/Workforce Development

- A. Vote to Convene in Executive Session**
- B. Vote to Acknowledge Return to Open Session**
- C. Statement of Minutes of Executive Session**

**16. Recommendation, Consideration and Vote to Approve the
Personnel Actions Set Out Below:**

RESIGNATION

RYAN DUNN, Criminal Justice Instructor, Idabel Campus

EMPLOYMENT/APPOINTMENT, RE-ASSIGNMENT AND/OR TRANSFER (Continued)

_____, TANF Instructor, Idabel Campus (12-Month Grant Teacher Contract)

_____, Construction Technology Instructor, Stigler Campus (10-Month Temporary Teacher Contract)

_____, Custodial/Maintenance - Evening, Stigler Campus (12-Month Support Contract)

_____, Practical Nursing Instructor, Hugo Campus (11-Month Adult Ed. Instructor Contract)

_____, Industrial Coordinator, Durant Campus (12-Month Professional Staff Contract)

SADIE WATKINS, Transfer from Secretary, Poteau Campus to Secretary, Durant Campus

LINDSEY SPRADLEY, Transfer from Teaching Assistant, Poteau Campus to Secretary, Poteau Campus (12-Month Support Contract)

RAYMOND WILSON, Assistant Director, McAlester Campus – Addendum to Contract for Additional Job Duties

CHOCTAW CAREER DEVELOPMENT PERSONNEL FY 2018-2019

NAME	POSITION
David L. Billy	Career Counselor
Kelly R. Brame	Counselor/Part-Time Director and Evaluator PATHS Program
Jane E. Buffington	Career Counselor
Robin Counce	Director
Tracy D. Lick	Career Counselor
Bryan H. Martin	Teacher
Cynthia M. Martin	Career Counselor
Rhonda L. Mize	Academic Coordinator
Martha J. Rorie	Job Placement/Workforce Development

- 17. Recommendation, Consideration and Vote to Approve an Option to Purchase Real Estate and Option to Purchase Real Property Between KTC (“SELLER”) and the Choctaw County Industrial Authority (“PURCHASER”) Covering Certain Real Property Owned by KTC Located in Choctaw County, Oklahoma, Which is Identified as Tract 1, SW/4 of the NE/4, Choctaw County. (See: Schedule “D” of the Agenda)**

H. REPORTS:

Superintendent’s Report

I. NEW BUSINESS:

J. ANNOUNCEMENT OF NEXT MEETING:

The next regular meeting of the Board is scheduled for:

**Tuesday, July 10, 2018
12:15 P.M.
KTC – McAlester Campus
301 Kiamichi Drive
McAlester, OK 74501**

K. VOTE TO ADJOURN:

Posted By: _____
Date Posted: _____
Time Posted: _____
Place Posted: _____
Signed: _____

SCHEDULE A

**SHORT TERM INSTRUCTORS AND PART TIME EMPLOYEES
2018 - 2019**

NAME	JOB DESCRIPTION	CAMPUS
ABLES, LAURIE	STA INSTRUCTOR, ADOBE PHOTOSHOP, DIGITAL PHOTOGRAPHY	ATOKA
ALLEN, JEFF	FIRE TRAINING	ATOKA
ANDERSON, KELSIE	STA INSTR - COMPUTER, FINANCE, MARKETING, AND SOCIAL MEDIA CLASSES	ATOKA
BARNETT, HOLLIE	STA INSTR - LTCNA, PHLEBOTOMY, CMA, MAT, BLS/HEALTH RELATED	ATOKA
BARTLETT, JACOB	FEDERAL WORK-STUDY/MAINTENANCE	ATOKA
BLUE, AARON	STA INSTR - SAFETY, FIRE TRAINING	ATOKA
BLUE, BERNEY	STA INSTR - SAFETY, FIRE TRAINING	ATOKA
BURNS, LORI	SUBSTITUTE - COSMETOLOGY	ATOKA
BURNS, MICHAEL	SAFETY INSTR - FIRE TRAINING INSTR	ATOKA
CAGLE, KRISTAN	STA INSTR - BUSINESS AND COMPUTER CLASSES	ATOKA
CHASE, RICKY	STA INSTR - RADIO BROADCASTING CLASS	ATOKA
COCHRAN, SHERRI	STA INSTRUCTOR/CAKE DECORATING/ART CLASSES	ATOKA
COCHRAN, TYLER	STA INSTR - SAFETY	ATOKA
DODD, KANDRA (SPRINGER)	STA INSTR - PHLEBOTOMY/CMA/CLINICAL SKILLS OBSERVER	ATOKA
DUNLAP, LATRISHA	STA INSTR - LTC NURSE AIDE	ATOKA
GOODSON, JODY	STA INSTR - WELDING	ATOKA
HAMILTON, ERIC	STA INSTR - SAFETY AND ADULT ED	ATOKA
HANSEN, PATRICIA	STA INSTR - GENEALOGY	ATOKA
HEAD-ROBERSON, COURTNEY	WORK STUDY MAINTENANCE	ATOKA
HENRY, LEA ANN	STA INSTR - LTCNA, CMA, MED TERMINOLOGY, PHLEBOTOMY	ATOKA
HUDSON, TROY L.	STA INSTR - SAFETY, FIREFIGHTER COURSES	ATOKA
JOHNSON, TOMMY	STA INSTR - SCHOOL BUS DRIVING	ATOKA
JUSTUS, JEANA	STA INSTR - CNA, CHHA, CMA	ATOKA
LEWIS, REGINA	SUBSTITUTE - ALL PROGRAMS	ATOKA
LIDDY, LEE	STA INSTR - OSHA TRAINING	ATOKA
LLOYD, CRYSTAL	STA INSTR - LTCNA, PHLEBOTOMY, CMA, MAT INSTR.	ATOKA
MARTIN-PRICE, BONITA	STA INSTR - TATTING/LACE MAKING, PINE NEEDLE BASKET CLASS	ATOKA
MCDONALD, GARY L.	STA INSTR - CDL AND SCHOOL BUS DRIVER	ATOKA
MUGGLI, RENO	SUBSTITUTE - AUTOMOTIVE SERVICE TECH	ATOKA
MUNHOLLAND, JEANNA	STA INSTR - HEALTH	ATOKA
PAXTON, BRIDGET	SUBSTITUTE - ALL PROGRAMS	ATOKA
POGUE, ERICA	STA INSTR - COMPUTER CLASSES	ATOKA
ROBERSON, COURTNEY	FEDERAL WORK-STUDY CLERICAL/MAINTENANCE	ATOKA
SANDERS, THERESA	STA INSTR - SUBSTITUTE/COSMETOLOGY	ATOKA
STEPHENS, HAROLD	STA INSTRUCTOR, DUTCH OVEN CLASSES	ATOKA
TERREBONNE, DANNY	STA INSTR - CPR	ATOKA
TIPTON, PATRICIA	STA INSTR - LTCNA, CMA, CMA UPDATE, CLINICAL SKILLS OBSERVER	ATOKA
WILSON, (WALKER), SHEA	SUBSTITUTE - COSMETOLOGY	ATOKA
ASHLEY, SALLY	SUBSTITUTE - ALL PROGRAMS	DURANT
BECK, KAREN	STA INSTR - EMS	DURANT
BEHRENS, WILLIAM KENNETH	STA - REAL ESTATE	DURANT
BELL, ELIZABETH	SUBSTITUTE - ALL PROGRAMS	DURANT

NAME	JOB DESCRIPTION	CAMPUS
BENTLEY, AARON	STA INSTR - AUTO SVC TECH (During Burkhalter's Deployment)	DURANT
BERGNER, JAY	STA INSTR - FIRE TRAINING/EMS	DURANT
BLACKSHEAR, KELLY	STAT INSTR - CCMA	DURANT
BOURNE, ARNOLD	STA INSTR - CPR/SMALL ENGINE/SAFETY/BUS DRIV CDL PREP/CUSTOMIZED IND.	DURANT
BOYETT, CHARLES	MAINTENANCE, BUS DRIVER	DURANT
BRISCOE, CRYSTAL J.	STA INSTR - LONG TERM CARE NURSE AIDE	DURANT
COLVARD, JASON	STA INSTR - PHASE 1 AND PHASE II PRIVATE SECURITY	DURANT
CONDOR, CHASE	STA INSTR - FIRE TRAINING	DURANT
CRAWFORD, LUEL	SUBSTITUTE - ALL PROGRAMS	DURANT
DANDERSON, MELINDA F	STA INSTR - CLINICAL SKILLS EXAMINER	DURANT
DUFUR, MEGAN	STA INSTR - CAKE DECORATING	DURANT
DUNN, ANDREA	STA INSTR - HOME HEALTH AIDE INSTR/MAT SKILLS/CNA SKILLS/CMA	DURANT
FORD, KIMBERLY	STA INSTR - CERTIFIED MEDICATION AIDE CLASS	DURANT
FULLER, LAURAN	STA CAKE DECORATING	DURANT
GOBERT, MARILYN	SUBSTITUTE - ALL CLASSES EXCEPT T & I	DURANT
GREEN, JAMES (JIMMY)	SUBSTITUTE TEACHER - WELDING CLASS	DURANT
HAYES, LOGAN	STA INSTR - SAFETY	DURANT
HICKS, LORENDA	STA INSTR - SPECIAL ED PARAPROFESSIONAL	DURANT
JACKSON, JAMES KANNON	STA INSTR - CPR, CUSTOMIZED, SAFETY	DURANT
KENNEDY, SHERLYNN	STA INSTR - FINANCIAL CLASSES	DURANT
LADD, SUMMER	STA INSTR - EMS	DURANT
LASSEN, CRYSTAL	STA INSTR - CPR	DURANT
LEWIS, JOSHUA	STA INSTR- CPR/SAFETY	DURANT
MACON, WILLIAM	STA INSTR - FIREFIGHTER TRAINING, PROCTOR/EVALUATOR DUTIES	DURANT
MCCOLLOM, WENOA R.	ASSISTING EMS WITH SKILLS TRAINING	DURANT
MCLARRY, ASHLEY	STA INSTR - CPR	DURANT
PENA, ESTRELLA MARIA	SUBSTITUTE - ALL PROGRAMS	DURANT
RAMOS, RUBEN	TANF MOVE	DURANT
REESE, JESSICA	STA INSTR - CPR	DURANT
RIDGWAY, CHARLENE	STA INSTR - IND SPECIFIC, MICROSOFT OFFICE	DURANT
RITTERHOUSE, JEREMY	STA INSTR - MATH MADE EASY	DURANT
RUDOLF, DUSTIN	SUBSTITUTE - ALL PROGRAMS	DURANT
SPEARS, SUSAN	STA INSTR - PHLEBOTOMY INSTRUCTOR	DURANT
VIETTA, JOHN	STA INSTR - FIRE TRAINING	DURANT
WEGER, CHANCE	ASSIST W/EMT/PARAMEDIC SKILLS TRAINING	DURANT
WELLS, LENIOAL	BUS DRIVER, MAINTENANCE	DURANT
WEST, NATASHA	STA INSTR - EMT/EKG/CPR/EMR	DURANT
ALLISON, JAMIE	STA INSTR - EMT (ASSIST PARAMEDIC/EMT SKILLS TRAINING)	EMS D-WIDE
BOGUE, JOSHUA	STA INSTR - EMS SKILLS EVALUATOR	EMS D-WIDE
BROOKS, JEFFREY	STA INSTR - EMS SKILLS EVALUATOR	EMS D-WIDE
CONLEY, CINDY	STA INSTR - EMS SKILLS EVALUATOR	EMS D-WIDE
CUMMINS, (HORN) DEBORAH	STA INSTR - EMS SKILLS EVALUATOR	EMS D-WIDE
CRANK, CIERA	STA INSTR - EMS SKILLS EVALUATOR	EMS D-WIDE
CRENSHAW, BRADLEY	STA INSTR - EMS SKILLS EVALUATOR	EMS D-WIDE
ELROY, SOLVEIG	STA INSTR - EMS SKILLS EVALUATOR	EMS D-WIDE
FALCO, CHRISTOPHER	STA INSTR - EMS SKILLS EVALUATOR	EMS D-WIDE

NAME	JOB DESCRIPTION	CAMPUS
FOX, NATHAN	STA INSTR - EMS SKILLS EVALUATOR	EMS D-WIDE
GORMAN, ANTHONY	STA INSTR - EMS SKILLS EVALUATOR	EMS D-WIDE
GRACE, BENJAMIN	STA INSTR - EMS SKILLS EVALUATOR	EMS D-WIDE
GRACE, MICHAEL	STA INSTR - EMS SKILLS EVALUATOR	EMS D-WIDE
GRAHAM, GREG	STA INSTR - EMS SKILLS EVALUATOR	EMS D-WIDE
HARTSFIELD, RICHARD	STA INSTR - EMS SKILLS EVALUATOR	EMS D-WIDE
HOWARD, THOMAS	STA INSTR - EMS SKILLS EVALUATOR	EMS D-WIDE
HUGGINS, JOSHUA	STA INSTR - EMS SKILLS EVALUATOR	EMS D-WIDE
HULSEY, DENNIS	STA INSTR - EMS SKILLS EVALUATOR	EMS D-WIDE
IBISON, JEREMY	STA INSTR - EMS SKILLS EVALUATOR	EMS D-WIDE
IMHOFF, PAUL	STA INSTR - EMS SKILLS EVALUATOR	EMS D-WIDE
IRELAND, THOMAS	STA INSTR - EMS SKILLS EVALUATOR	EMS D-WIDE
JOHNSON, JAMES B.	STA INSTR - EMS SKILLS EVALUATOR	EMS D-WIDE
KRUPA, HANNAH	STA INSTR - EMS SKILLS EVALUATOR	EMS D-WIDE
LADD, SUMMER	STA INSTR - EMS SKILLS EVALUATOR	EMS D-WIDE
LASSEN, CRYSTAL	STA INSTR - EMS SKILLS EVALUATOR	EMS D-WIDE
LAWSON, (WAKEHAM) MYKA	STA INSTR - EMS SKILLS EVALUATOR	EMS D-WIDE
LAWSON, JABE	STA INSTR - EMS SKILLS EVALUATOR	EMS D-WIDE
LEMONS, ERIN	STA INSTR - EMS SKILLS EVALUATOR	EMS D-WIDE
MCCOLLUM, WENOA	STA INSTR - EMS SKILLS EVALUATOR	EMS D-WIDE
MILLER, JAMES	STA INSTR - EMS SKILLS EVALUATOR	EMS D-WIDE
MORRIS, CHRISTOPHER	STA INSTR - EMS SKILLS EVALUATOR	EMS D-WIDE
MORRIS, PATRICIA (TRISH)	STA INSTR - EMS SKILLS EVALUATOR	EMS D-WIDE
MURRAY, FLOYD	STA INSTR - EMS SKILLS EVALUATOR	EMS D-WIDE
NELSON, MARTY	STA INSTR - EMS SKILLS EVALUATOR	EMS D-WIDE
PARKER, JAMES	STA INSTR - EMS SKILLS EVALUATOR	EMS D-WIDE
SPALDING, DARRELL	STA INSTR - EMS SKILLS EVALUATOR	EMS D-WIDE
SPENCER, JOSHUA	STA INSTR - EMS SKILLS EVALUATOR	EMS D-WIDE
STAATS, JOHN	STA INSTR - EMS SKILLS EVALUATOR	EMS D-WIDE
STANKEWITZ, ANTHONY	STA INSTR - EMS SKILLS EVALUATOR	EMS D-WIDE
STEINKAMP, JEFFREY	STA INSTR - EMS SKILLS EVALUATOR	EMS D-WIDE
VIETTA, JOHN	STA INSTR - EMS SKILLS EVALUATOR	EMS D-WIDE
WEEKS, DAVID	STA INSTR - EMS SKILLS EVALUATOR	EMS D-WIDE
WEGER, CHANCE	STA INSTR - EMS SKILLS EVALUATOR	EMS D-WIDE
WHEAT, CHARLES	STA INSTR - EMS SKILLS EVALUATOR	EMS D-WIDE
WILSON, RUSTY	STA INSTR - EMS SKILLS EVALUATOR	EMS D-WIDE
ABU NAMOOS, AMBER	STA INSTR - PERSONAL ENRICHMENT AND COMPUTER CLASSES	HUGO/ANTLERS
ADAMSON, PAMELA	STA INSTR - SAFETY, CPR	HUGO/ANTLERS
BIRCHFIELD, MICHELLE	STA INSTR - MEDICAL TERMINOLOGY, HEALTH RELATED CLASSES	HUGO/ANTLERS
BOREN, TARA	STA INSTR - JEWELRY MAKING, CRAFT AND COMPUTER CLASSES	HUGO/ANTLERS
BRAY, ANNTRICIA	STA INSTR - CNA	HUGO/ANTLERS
BURCH, TERRY	STA INSTR - FIRE FIGHTING, SAFETY AND CPR	HUGO/ANTLERS
CAPPS, JAMES	STA INSTR - SELF DEFENSE, WORKPLACE SAFETY, RISK MGMT. CLASSES	HUGO/ANTLERS
CREACH, KATHEY	STA INSTR - MATH INSTRUCTOR	HUGO/ANTLERS
DUNN, KENNETH RYAN	STA INSTR - UNARMED SECURITY GUARD, FIREFIGHTER	HUGO/ANTLERS
GAY, DELBERT	STA INSTR - CPR,SAFETY, FIREFIGHTER	HUGO/ANTLERS

NAME	JOB DESCRIPTION	CAMPUS
GAY, PATRICIA G.	STA INSTR - CAKE DECORATING	HUGO/ANTLERS
GIBSON, THERESA	SUBSTITUTE- ALL PROGRAMS; STA INSTR - TRAIN	HUGO/ANTLERS
HYATT, RANDY	STA INSTR - BASIC LIFE SUPPORT AND CPR CLASSES	HUGO/ANTLERS
IRVIN, RHONDA	STA INSTR - CLINICAL SKILLS EVALUATOR	HUGO/ANTLERS
KOS, AUGUSTA	STA INSTR - CPR, SAFETY, FIREFIGHTER	HUGO/ANTLERS
LUDLOW, REBECCA	STA INSTR - CNA, CPR, SAFETY, PHLEBOTOMY	HUGO/ANTLERS
LUDLOW, RICHARD	STA INSTR - RN SUPERVISOR FOR CNA PROGRAM/CPR	HUGO/ANTLERS
MATHEWSON, AMARYLLIS	STA INSTR - CNA, CPR, SAFETY	HUGO/ANTLERS
MCCLENDON, JILLYN K.	STA INSTR - CNA, CPR, SAFETY	HUGO/ANTLERS
MORRIS, CALETT	STA INSTR - CNA, CMA	HUGO/ANTLERS
MOYER, RODNEY	STA INSTR - SAFETY CLASSES	HUGO/ANTLERS
NEESE, CODY	STA INSTR - SOCIAL MEDIA, GOOGLE, COMPUTER, AND SMALL BUS. CLASSES	HUGO/ANTLERS
PETTYJOHN, JAMES	STA INSTR - CPR FIREFIGHTER	HUGO/ANTLERS
SNIDER, RANDY JOE	SUBSTITUTE - MATH AND COMPUTER CLASSES	HUGO/ANTLERS
TERREBONNE, DANNY	STA INSTR - CPR, SAFETY AND FIREFIGHTER	HUGO/ANTLERS
THURMAN, PAUL WADE	BUS DRIVER-MOYERS/CUSTODIAL MAINTENANCE	HUGO/ANTLERS
TOBANACHE-OLIVIA, CATHRINE	STA INSTR - SPANISH IN THE WORKPLACE	HUGO/ANTLERS
TOLLETT, LISA K.	STA INSTR - COMPUTER BASICS	HUGO/ANTLERS
WEBSTER, JOANNE	SUBSTITUTE - TRAIN PROGRAM	HUGO/ANTLERS
APPLE, JENNY L.	STA INSTR - PHLEBOTOMY	IDABEL
BEAM, HEATHER	BUS DRIVER (EAGLETOWN)/CLERICAL	IDABEL
BLACK, LISA	BANQUET DUTIES	IDABEL
BOSTICK, DARRELL	SUBSTITUTE - ALL PROGRAMS	IDABEL
BROOKS, BILLY	STA INSTR - EMT, CPR CLASSES	IDABEL
BROWN, JAMES L.	STA INSTR - SAFETY TRAINING	IDABEL
CASANOVER, TERRI	STA INSTR - CAKE DECORATING AND FLORAL DESIGN	IDABEL
CHADWICK, KRISTIN	STA INSTR - HEALTH RELATED COURSES	IDABEL
CHILDS, CHARLES L.	STA INSTR - BUS DRIVER TRAINING	IDABEL
COLEMAN, RANDALL	SUBSTITUTE - ALL PROGRAMS	IDABEL
CONLEY, CINDY	STA INSTR - EMS, EMT CLASSES	IDABEL
DAWSON, JULIE	STA INSTR - VARIOUS COMPUTER CLASSES	IDABEL
DREW, WALTER	STA INSTR - FFPA 70E ARC FLASH TRAINING	IDABEL
DUNN, KENNETH RYAN	STA INSTR - PRIVATE SECURITY GUARD, PHASE I AND II	IDABEL
FALLING, JERRY, II	STA INSTR - CPR CLASSES	IDABEL
FARLEY, BETHANY	STA INSTR - CAKE DECORATING/ENGLISH PREP CLASS FOR PN HESI EXAM	IDABEL
FIELDS, JAMIE	STA INSTR - CLINICAL SKILLS OBSERVER	IDABEL
FREEMAN, CONNIE	STA INSTR - MEDICAL MATH, PARAPROFESSIONAL	IDABEL
FRUNK, JOSEPH	STA INSTR - SAFETY, FIREFIGHTER	IDABEL
GARDNER, JERRY D.	STA INSTR - COOKING AND BAKING	IDABEL
GILBERT, CODY	STA INSTR - FIREFIGHTER SERVICE AND INDUSTRY SAFETY	IDABEL
HARCROW, MELISSA	STA INSTR - DSLR PHOTOGRAPHY, PHOTO SHOP, HOW TO BE PUBLISHED	IDABEL
HASKIN, VIRGIL	STA INSTR - PRIVATE SECURITY GUARD	IDABEL
HAYES, LOGAN	STA INSTR - SAFETY	IDABEL
JOHNSON, MILLISSA	CLINICAL SKILLS OBSERVER	IDABEL
KIRKPATRICK, GLENDA E.	SUBSTITUTE - COSMETOLOGY	IDABEL
LANSDELL, TINA	SUMMER YOUTH ACADEMY: COSMETOLOGY; JUNE 25-28, 2018	IDABEL

NAME	JOB DESCRIPTION	CAMPUS
LAWSON, KENNETH	STA INSTR - PRIVATE SECURITY GUARD	IDABEL
MCBROOM, PRISCILLA	BUS DRIVER, CLERICAL (SMITHVILLE H.S.)	IDABEL
MCCAIG, TOMMY	SUBSTITUTE - ALL PROGRAMS	IDABEL
MOORE, BYRON	SAFETY, CUST IND INSTR - GENERAL SAFETY, MOBILE EQUIPMENT AND CPR	IDABEL
MOYER, RODNEY	STA INSTR - SAFETY	IDABEL
MURRAY, FLOYD	STA INSTR - EVOC, SUBSTITUTE - EMT	IDABEL
NELSON, LAGAYLA	STA INSTR - FLORAL BOWS AND WREATH ARRANGING CLASSES	IDABEL
OVERTURF, WILLIE	STA INSTR - HEALTH RELATED COURSES and CNA SKILLS TESTING	IDABEL
PARSONS, PAMELA	BUS DRIVER (BATTIEST), CLERICAL	IDABEL
POND-DEVER, AMANDA	FEDERAL WORK-STUDY - SERVING LINE	IDABEL
RYMEL, DENA L.	STA INSTR - COMPUTER RELATED COURSES	IDABEL
SARGENT, TRAVIS	STA INSTR - WELDING	IDABEL
SMITH, JAY	STA INSTR - INDUSTRIAL TRAINING AND TESTING	IDABEL
SMITH, JR., JAMES L.	STA INSTR - EMT, CPR	IDABEL
SPEARS, KYLE E.	STA INSTR - LTCNA, CMA, HHA, CMA UPDATE AND CMA ADVANCED CLASSES	IDABEL
SWEEDEN, JUDITH	SUBSTITUTE - CULINARY ARTS, ALL PROGRAMS	IDABEL
TAPLEY, PATRICIA	STA INSTR - HEALTH RELATED COURSES/SKILLS TESTING	IDABEL
TIMMS, ANGELA	BUS DRIVER, CLERICAL	IDABEL
TISHO, CASSIE	STA INSTR - FITNESS CLASSES	IDABEL
TOLLETT, LISA K.	STA INSTR - COMPUTER/BUSINESS CLASSES/SOCIAL MEDIA BASICS	IDABEL
TSOSIE, DON	BUS DRIVER (WRIGHT CITY)/MAINTENANCE	IDABEL
VANN, WILLIAM LEO	SUBSTITUTE	IDABEL
WATSON, CONNIE	STA INSTR - HALF-TIME EVENING COSMETOLOGY INSTR	IDABEL
WHISENHUNT, AMBER	STA INSTR - YOGA CLASSES	IDABEL
WILLISTON, FLORENCE M.	SUBSTITUTE - COSMETOLOGY	IDABEL
YOUNG, CANDICE D.	STA INSTR - PHLEBOTOMY	IDABEL
ADAY, ALLISON	SUMMER SEMINAR FOR EAST JULY 24 - 27, 2018	MCALESTER/EUF.
ALLAN, PAUL	FEDERAL WORK STUDY - MAINTENANCE	MCALESTER/EUF.
BAILEY, RACHEL	STA INSTR - PHLEBOTOMY	MCALESTER/EUF.
BAKER, NINA	FEDERAL WORK-STUDY - CLERICAL/MAINTENANCE	MCALESTER/EUF.
BENEFIELD, ROBIN (Now Wilson)	STA INSTR - SPECIAL EDUCATION PARAPROFESSIONAL	MCALESTER/EUF.
BERGNER, JAY	STA INSTR - FIRE TRAINING	MCALESTER/EUF.
BITELY, KAREN	SUBSTITUTE - ALL PROGRAMS	MCALESTER/EUF.
BLESNER, MARTHA	SUBSTITUTE - EUFAULA	MCALESTER/EUF.
BLESSING, DELORES	SUBSTITUTE - ALL PROGRAMS	MCALESTER/EUF.
BOGARD-WILKETT, KELLY	STA INSTR - MASSAGE CLASSES	MCALESTER/EUF.
CALDWELL, BLAKE	FEDERAL WORK STUDY - MAINTENANCE	MCALESTER/EUF.
CATHEY, DONALD	STA INSTR - EVENING MACHINE TECHNOLOGY	MCALESTER/EUF.
CHAMBLESS, MARIE	STA INSTR - COMPUTERS	MCALESTER/EUF.
COLLIER, APRIL	NEW EMPLOYEE MFG. ORIENTATION	MCALESTER/EUF.
CRAWLEY, ELIZABETH	STA INSTR - COMPUTER CLASSES	MCALESTER/EUF.
CUZALINA, GABRIELLE	STA INSTR - PHLEBOTOMY	MCALESTER/EUF.
DAVIS, MARK	SUBSTITUTE - EUFAULA CLASSES	MCALESTER/EUF.
DOBSON, JOHNNY A.	BUS DRIVER	MCALESTER/EUF.
DOWNING, JEANA	NEW TEACHER ACADEMY JULY 9 - 11, 2018	MCALESTER/EUF.
EDWARDS, CINDA	SUBSTITUTE - ALL PROGRAMS	MCALESTER/EUF.

NAME	JOB DESCRIPTION	CAMPUS
FERGUSON, JERRY	SUBSTITUTE - ALL PROGRAMS	MCALESTER/EUF.
FIELDS, RACHEL	STA INSTR - PHLEBOTOMY	MCALESTER/EUF.
FUNBURG, JOYCE	SUBSTITUTE - FULL TIME CLASSES	MCALESTER/EUF.
GIAUDRONE, LEA	NEW EMPLOYEE MFG. ORIENTATION	MCALESTER/EUF.
GIBSON, WARNA	SUMMER SEMINAR FOR EAST JULY 24 - 27, 2018	MCALESTER/EUF.
GILLESPIE, BETTYE	STA INSTR - CNA, CMA, CPR, FEEDING ASST, MAT, RESP. CARE	MCALESTER/EUF.
HARKEY, BARBARA	SUBSTITUTE - FULL TIME CLASSES	MCALESTER/EUF.
HOLLON, DONNA	SUBSTITUTE - ALL PROGRAMS	MCALESTER/EUF.
HOWARD, THOMAS	STA INSTR - EMS	MCALESTER/EUF.
JOHNSON, BARBARA	BUS DRIVER	MCALESTER/EUF.
JOHNSTON, JOHN	STA INSTR - COMPUTER CLASSES, MATH, CUSTOMIZED INDUSTRY TRAINING	MCALESTER/EUF.
KLEPPER, JOLENE	SUBSTITUTE - ALL PROGRAMS	MCALESTER/EUF.
LATIMER, MARGARET	STA INSTR - RN SUPERVISOR, CLINICAL SKILLS OBSERVER	MCALESTER/EUF.
LEDFORD, CONSTANCE	SUBSTITUTE - EUFAULA	MCALESTER/EUF.
LIDDY, LEE	STA INSTR - SAFELAND USA	MCALESTER/EUF.
LIVINGSTON, RANDY	STA INSTR - CUST IND TRNG - IND MAINT TRNG	MCALESTER/EUF.
LUDLOW, RICHARD	STA INSTR - CPR	MCALESTER/EUF.
MABRY, JILL	STA INSTR - COURT REPORTING CLASSES	MCALESTER/EUF.
MAIRS, DIANA	SUBSTITUTE - ALL PROGRAMS	MCALESTER/EUF.
MCCRAY, EULA JEAN	BUS DRIVER	MCALESTER/EUF.
MCNUTT, MICHELLE	STA INSTR - QUICKBOOKS	MCALESTER/EUF.
MENDEZ, BARBARA	SUBSTITUTE - EUFAULA CLASSES	MCALESTER/EUF.
MONTGOMERY, ROYCE	BUS DRIVER, MAINTENANCE	MCALESTER/EUF.
MORRIS, CHRISTOPHER	STA INSTR - EMS - SAFETY/CPR/FORKLIFT	MCALESTER/EUF.
MYERS, VICTORIA M.	STA INSTR - LONG TERM CNA, CMA, CAM UPDATES & ADVANCED	MCALESTER/EUF.
NORTON, BRIAN	STA INSTR - FIRE FIGHTER	MCALESTER/EUF.
O'NESKY, MARY	SUBSTITUTE - ALL PROGRAMS	MCALESTER/EUF.
OSBORNE, JEFF	NEW TEACHER ACADEMY JULY 9 -11, 2018	MCALESTER/EUF.
OSBORNE, JESSICA	STA INSTR - PHLEBOTOMY INSTRUCTOR	MCALESTER/EUF.
PICKENS, ISOM	FEDERAL WORK STUDY - MAINTENANCE	MCALESTER/EUF.
PICOTTE, JACKIE	BUS DRIVER	MCALESTER/EUF.
RAY, DWAYNE	STA INSTR - SPIRIT AEROSYSTEMS MACHINIST TRAINING	MCALESTER/EUF.
RIBACK, HOWARD J.	STA INSTR - COMPUTER APPLICATIONS NETWORKING CLASSES	MCALESTER/EUF.
RILEY, DON	STA INSTR - SPIRIT AEROSYSTEMS, STRUCTURE, PERS DEV CLASSES	MCALESTER/EUF.
RILEY, SELINA	STA INSTR - TESTING PREPARATION	MCALESTER/EUF.
RINGS, NANCY	BUS DRIVER	MCALESTER/EUF.
ROGERS, TONYA	STA INSTR - COURT REPORTING CLASSES	MCALESTER/EUF.
SALCEDO, JOY	SUMMER SEMINAR HIGH SCHOOLS THAT WORK JULY 10 - 15, 2018	MCALESTER/EUF.
SCIFRES, KARL	STA INSTR - BUSINESS CLASSES	MCALESTER/EUF.
SCIFRES, KATHRYN	STA INSTR - CULINARY CLASSES	MCALESTER/EUF.
SEWELL, MATTHEW	STA INSTR - CUST IND TRNG - WELDING TRNG	MCALESTER/EUF.
SISTRUNK, BILLIE	STA INSTR - BUS DRIVER TRAINING	MCALESTER/EUF.
SMITH, JR., ALTON	STA INSTR - PRIVATE SECURITY, SAFETY, FORKLIFT, DRIVER IMPROV, CPR	MCALESTER/EUF.
SPEARS, BRAD	DEVELOP MATH CURRICULUM, 3 DAYS IN JULY	MCALESTER/EUF.
SPENCER, RIMMEL	STA INSTR - TIP - CUST IND TRNG/STRUCTURES	MCALESTER/EUF.
SULLIVAN, CARRIE	SUBSTITUTE - ALL PROGRAMS	MCALESTER/EUF.

NAME	JOB DESCRIPTION	CAMPUS
TEDDER, RICHARD	STA INSTR - SPIRIT AEROSYSTEMS MACHINIST TRAINING	MCALESTER/EUF.
THACKER, KANDA	SUBSTITUTE - ALL PROGRAMS (EUFAULA)	MCALESTER/EUF.
TODD, BRENT	STA INSTR - WELDING	MCALESTER/EUF.
TRULY, LESLIE	STA INSTR - LEGAL STUDIES	MCALESTER/EUF.
WEEKS, DAVID	SUBSTITUTE - EMT CLASSES	MCALESTER/EUF.
WILSON, ROBIN (Was Benefield)	STA INSTR - SPECIAL EDUCATION PARAPROFESSIONAL	MCALESTER/EUF.
WINES, THOMAS	STA INSTR - FIRE FLASHOVER TRNG FOR MCA FIREFIGHTER CLASSES	MCALESTER/EUF.
WOOD, GREGORY	STA INSTR - CUST IND TRNG/LEADERSHIP ACADEMY	MCALESTER/EUF.
ARMSTRONG, MONA	PRACTICAL NURSING	PN D-WIDE
BARNETT, HOLLIE	PRACTICAL NURSING	PN D-WIDE
GILBERT, BONNIE	PRACTICAL NURSING	PN D-WIDE
LOREY, SUSAN D	PRACTICAL NURSING	PN D-WIDE
PIERCE, MELISSA	PRACTICAL NURSING	PN D-WIDE
SEALE, NETTIE L	PRACTICAL NURSING	PN D-WIDE
SPARKS, JANE	PRACTICAL NURSING	PN D-WIDE
ADAMS, JODY	STA INSTR - PERSONAL ENRICHMENT CLASSES, WOODWORKING/FISHING	POTEAU/SPIRO
ASBIL, MORGAN	LTCNA TRAINING	POTEAU/SPIRO
BANDY, AMANDA K.	STA INSTR - HEALTH/SAFETY	POTEAU/SPIRO
BISHOFF, GARRY	SAFETY INSTR and IND SPECIFIC INSTR - MINER TRAINING	POTEAU/SPIRO
BISHOP, JEANNIE	STA INSTR - HEALTH, SAFETY CLASSES	POTEAU/SPIRO
BOARDMAN, AMANDA	FEDERAL WORK-STUDY - CLERICAL/MAINTENANCE	POTEAU/SPIRO
BOWEN, NOAH	FEDERAL WORK-STUDY - CLERICAL/MAINTENANCE	POTEAU/SPIRO
BRAND, TASIA	STA INSTR - SAFETY, HEALTH	POTEAU/SPIRO
BROWN, JOYE	STA INSTR - NRP CLASSES (NEONATAL RESUSCITATION PROGRAM)	POTEAU/SPIRO
CAGLE, MELINDA ANN	SUBSTITUTE - ALL PROGRAMS	POTEAU/SPIRO
CLARK, LARRY	STA INSTR - FLY FISHING CLASSES	POTEAU/SPIRO
CORBIN, SHANNON	BANQUET DUTIES (AS NEEDED)	POTEAU/SPIRO
CRANK, CIERA	STA INSTR - HEALTH, SAFETY, FIREFIGHTER CLASSES	POTEAU/SPIRO
CRUSE, NICOLE	STA INSTR - COMPUTERS, BUSINESS, ENGLISH CLASSES	POTEAU/SPIRO
CURIEL-RESENDIZ, JUAN	SAFETY INSTR - SPANISH MINER TRNG (ROCK QUARRIES)	POTEAU/SPIRO
CURRY, MEMORY	STA INSTR - SAFETY AND HEALTH CAREERS CLASSES	POTEAU/SPIRO
DEDMON, AMANDA	STA INSTR - FIREFIGHTER, SAFETY	POTEAU/SPIRO
DEDMON, MARK	STA INSTR - HEALTH, FIREFIGHTER, SAFETY	POTEAU/SPIRO
DEVORA, ROXANA	STA INSTR - SPANISH MINING CLASSES	POTEAU/SPIRO
EIDSON, LINDSEY	STA INSTR - CALLIGRAPHY CLASSES	POTEAU/SPIRO
FALKNER, DANA	STA INSTR - ART	POTEAU/SPIRO
FALKNER, KELLY	STA INSTR - STEM CLASSES	POTEAU/SPIRO
FLOYD, MARCUS R.	STA INSTR - FIREFIGHTER TRAINING, SAFETY AND IND SPECIFIC	POTEAU/SPIRO
GAMMEL, JR., KEITH	STA INSTR - FIRE FIGHTER, SAFETY AND HEALTH CLASSES	POTEAU/SPIRO
GERALDS, GARY	STA INSTR - SAFETY/MINER TRAINING	POTEAU/SPIRO
GIBSON, JEFF	STA INSTR - FIREFIGHTER, SAFETY	POTEAU/SPIRO
GILBERT, BONNIE	STA INSTR - HEALTH, SAFETY	POTEAU/SPIRO
GREEN, BILL	STA INSTR - UNARMED SECURITY GUARD PHASE I and II	POTEAU/SPIRO
GRIFFITH, JULIA LYNN	SUBSTITUTE - ALL PROGRAMS	POTEAU/SPIRO
HAAG, ROBERT	STA INSTR - SAFETY OPERATIONS INSTR	POTEAU/SPIRO
HANKS, TRAVIS	STA INSTR - PERSONAL ENRICHMENT CLASSES	POTEAU/SPIRO

NAME	JOB DESCRIPTION	CAMPUS
HARPER, DOUG	SAFETY INSTR - INDUSTRY SPECIFIC	POTEAU/SPIRO
HARRISON, II, MICHAEL	STA INSTR-SAFETY	POTEAU/SPIRO
HAYES, LOGAN	STA INSTR - HEALTH, SAFETY	POTEAU/SPIRO
HAYES, NATLYNN K.	STA INSTR - SAFETY INSTR	POTEAU/SPIRO
HAYNES, RUSTY	STA INSTR - WELDING	POTEAU/SPIRO
HENDERSON, DAVID	STA INSTR - HEALTH, SAFETY CLASSES	POTEAU/SPIRO
HINDS, DENISE	STA INSTR - HEALTH, SAFETY CLASSES	POTEAU/SPIRO
HOWARD, AMY	STA INSTR - HEALTH, SAFETY CLASSES	POTEAU/SPIRO
HULSEY, DENNIS	STA INSTR - HEALTH AND SAFETY CLASSES	POTEAU/SPIRO
KENNEDY, KEVIN R.	STA INSTR - HEALTH, SAFETY, FF TRAINING	POTEAU/SPIRO
KILLIAM, STACEY	BANQUET DUTIES (AS NEEDED)	POTEAU/SPIRO
KING, MICHAEL	STA INSTR - HVAC	POTEAU/SPIRO
KRUSKOPP, KARL	STA INSTR - HVAC CLASSES	POTEAU/SPIRO
LAWSON, (WAKEHAM), MYKA	STA INSTR - HEALTH, SAFETY	POTEAU/SPIRO
LIDDY LEE	STA INSTR - OSHA GEN IND OR CONSTR, SAFE LAND, H2S, FORKLIFT	POTEAU/SPIRO
LUM, ASHLEY	STA INSTR - HEALTH, SAFETY CLASSES	POTEAU/SPIRO
LUNGSTRUM, JANICE	STA INSTR - FLORAL ARRANGING, CRAFTS, BUSINESS	POTEAU/SPIRO
MARTINEZ, IRVING	STA INSTR - I-PHONE TIPS/TRICKS	POTEAU/SPIRO
MAYS, ROGER	SUBSTITUTE - ALL PROGRAMS	POTEAU/SPIRO
MODE, JOE	SUBSTITUTE - WELDING	POTEAU/SPIRO
MORRIS, BLENDIA	SUBSTITUTE - ALL PROGRAMS	POTEAU/SPIRO
MORRIS, PATRICIA (TRISH)	STA INSTR - SAFETY, HEALTH CLASSES	POTEAU/SPIRO
MOSBY, CHRISTOPHER SCOTT	STA INSTR - COMPUTER/IT CLASSES	POTEAU/SPIRO
NELSON, CORY T.	STA INSTR - CULINARY	POTEAU/SPIRO
NEWNAM, MICHAEL	STA INSTR - ELECTRICAL	POTEAU/Spiro
PATTERSON, MARY CAROLYN	STA INSTR - BEGINNING CAKE DECORATING	POTEAU/SPIRO
PATTERSON, STEVE	STA INSTR - SCIENCE COURSES	POTEAU/SPIRO
ROACH, VERNON III	STA INSTR - MINING TRNG AND SAFETY PROGRAMS	POTEAU/SPIRO
ROBERTSON, KIMBERLEE	SUBSTITUTE - ALL PROGRAMS	POTEAU/SPIRO
SAMPSON, TERRY	SUBSTITUTE - ALL PROGRAMS	POTEAU/SPIRO
SCANTLING, WHITNEY	STA INSTR - HEALTH, SAFETY CLASSES	POTEAU/SPIRO
SCHULTZ, LORI	STA INSTR - HEALTH, SAFETY CLASSES	POTEAU/SPIRO
SCOTT, SHALOM	SUBSTITUTE - ALL PROGRAMS	POTEAU/SPIRO
SLOAN, ROBBIE	STA INSTR - PERSONAL ENRICHMENT CLASSES	POTEAU/SPIRO
SMITH, JR., ALTON	STA INSTR - DEFENSIVE DRIVING	POTEAU/SPIRO
SOMMERS, JIM H.	STA INSTR - SAFETY PROGRAMS/INDUSTRY SPECIFIC	POTEAU/SPIRO
SPARKS, JANE	SUBSTITUTE - HCC PROGRAMS	POTEAU/SPIRO
SPEARS, BURL	STA INSTR - GREEK, COMPUTERS	POTEAU/SPIRO
STACY, RONA	STA INSTR - MEDICAL AND CODING CLASSES	POTEAU/SPIRO
STANKEWITZ, ANTHONY	STA INSTR - HEALTH, SAFETY CLASSES	POTEAU/SPIRO
STEINKAMP, JEFFREY	STA INSTR - EMS SKILLS EVALUATOR	POTEAU/SPIRO
STINSON, ANDREA	STA INSTR - HEALTH, SAFETY CLASSES	POTEAU/Spiro
STINSON, ANDREA	LTCNA TRAINING	POTEAU/SPIRO
STOVER, JULIE	STA INSTR - HEALTH, SAFETY CLASSES	POTEAU/SPIRO
STUBBLEFIELD, BRANDON	STA INSTR - SILICA/NOISE ASSESSMENTS -MINING INDUSTRY	POTEAU/SPIRO
STURGEON, TRACEY	STA INSTR - HEALTH, SAFETY, FIREFIGHTER	POTEAU/SPIRO

NAME	JOB DESCRIPTION	CAMPUS
SULLINS, TYSON	STA INSTR - WELDING	POTEAU/SPIRO
SULLIVAN, MELISA	BANQUET DUTIES (AS NEEDED)	POTEAU/SPIRO
THOMAS, DENNIS	STA INSTR - WELDING	POTEAU/SPIRO
TRUMM, DEE	BANQUET DUTIES (AS NEEDED)	POTEAU/SPIRO
TUCKER, J.R.	SUBSTITUTE TEACHER	POTEAU/SPIRO
TURNER, DAVID	STA INSTR - HEALTH, SAFETY CLASSES	POTEAU/Spiro
WALKER, MICHAEL	STA INSTR - SECURITY GUARD AND SAFETY CLASSES	POTEAU/SPIRO
WALKER, TAMMY	FEDERAL WORK-STUDY	POTEAU/SPIRO
WANN, TONYA	STA INSTR - HEALTH, SAFETY CLASSES	POTEAU/SPIRO
WATKINS, DAVA	STA INSTR - DENTAL ASSISTING	POTEAU/Spiro
WATSON, BRANDON	FEDERAL WORK-STUDY - CLERICAL/MAINTENANCE	POTEAU/SPIRO
WEBSTER, JASON	STA INSTR - BUS DRIVING INSTRUCTOR	POTEAU/SPIRO
WILKERSON, ARDITH	SUBSTITUTE TEACHER ALL PROGRAMS	POTEAU/SPIRO
WILLIAMS, DIANA K.	STA INSTR - SPECIAL EDUC PARAPROFESSIONAL TRAINER	POTEAU/SPIRO
WILLIAMS, KRIS	STA INSTR - SPEAKING, COMPUTERS, SOFT SKILLS	POTEAU/SPIRO
WILSON, TANNAH	SUBSTITUTE TEACHER ALL PROGRAMS	POTEAU/SPIRO
WINKLEPLECK, MARCIE	STA INSTR - HEALTH, SAFETY CLASSES	POTEAU/SPIRO
WINTERS, JAMI	STA INSTR - HEALTH, SAFETY CLASSES	POTEAU/SPIRO
YAKEL, CARA	STA INSTR - WRITING, SEWING, CRAFTS	POTEAU/SPIRO
YOUNG, ELIZABETH	STA INSTR - SAFETY PROGRAMS, HCC COURSES	POTEAU/SPIRO
BOYD, IRIS JEANETTE	SUBSTITUTE TEACHER	STIGLER
BRIGANCE, LOUIS	SUBSTITUTE	STIGLER
BUTTS, RAYNA	STA INSTR - WREATH AND FLOWER ARRANGEMENT	STIGLER
CAGLE, MELINDA ANN	SUBSTITUTE - COSMETOLOGY	STIGLER
COLLINS, BRENDA	STA INSTR - PARAPROFESSIONAL TRAINING	STIGLER
DOVER, JEFFREY	SUBSTITUTE/BUS DRIVER	STIGLER
ELLIS, REBECCA	STA INSTR - CNA	STIGLER
GERALDS, GARY	STA INSTR - SAFETY, MINER TRAINING	STIGLER
GERALDS, II, GARY	STA INSTR - MSHA	STIGLER
HAMILTON, KELLIE	STA INSTR - CAKE DECORATING	STIGLER
HARRIS, ASHLEY	STA INSTR - ZUMBA DANCE, FITNESS CLASSES	STIGLER
HOWARD, AMY	STA INSTR - SAFETY, CPR	STIGLER
JACK, CARA M.	FEDERAL WORK-STUDY - CLERICAL	STIGLER
JORDAN, MICHAEL B.	STA INSTR - DRIVER TRAINING, CPR	STIGLER
LAWSON, MYKA	STA INSTR - HEALTH/SAFETY	STIGLER
LIDDY, LEE	STA INSTR - SAFETY TRAINING (SAFELAND USA)	STIGLER
MARTIN, NOLA	SUBSTITUTE TEACHER	STIGLER
MORRIS, CHRISTOPHER	STA INSTR - CPR	STIGLER
NANCE, CHARLES (ED)	SUBSTITUTE	STIGLER
PERRY, AMIE	SUBSTITUTE - COSMETOLOGY	STIGLER
PERRY, SANDRA	STA INSTR - CPR, FIRST AID, AED	STIGLER
POWELL, PAULA	STA INSTR - PHLEBOTOMY	STIGLER
REED, LORI	STA INSTR - CLINICAL SKILLS OBSERVER/CPR/FIRST AID, NURSE AIDE	STIGLER
SHARPE, SHARON R.	MAINTENANCE, BUS DRIVER	STIGLER
SMITH, JR., ALTON	STA INSTR - SAFETY - FORKLIFT TRAINING	STIGLER
SMITH, BARBARA KAY	SUBSTITUTE - COSMETOLOGY	STIGLER

NAME	JOB DESCRIPTION	CAMPUS
SMITH, PATRICIA	STA INSTR - HEALTH RELATED CLASSES, RN SUPERV/CLINICAL SKILLS OBS	STIGLER
TATMAN, ED	SUBSTITUTE	STIGLER
THOMPSON, CYNTHIA	SUBSTITUTE - HCC, CARPENTRY, AUTOMOTIVE, WELDING	STIGLER
WEST, KRYSTAL L.	STA INSTR - CL SKILLS OBS, AED, RN SUPERVIS, CPR, FIRST AID	STIGLER
WHITE, EDITH	STA INSTR - CPR	STIGLER
WILLIAMS, KELLY	STA INSTR - YOGA INSTRUCTOR	STIGLER
WOLLERTON, ALAN	SUBSTITUTE BUS DRIVER, SUB. FOR CLASSROOM	STIGLER
CANTRELL, SUSAN	STA INSTR CLINICAL SKILLS OBSERVER/ADV. CMA	TALIHINA
DEDMON, AMANDA	DISTRICT SAFETY COMMAND TEAM TRAINING, JULY 11, 2018, MCALESTER	TALIHINA
FAIRLESS, ERIC	NEW TEACHER WORKSHOP, JULY 16-19, 2018; STILLWATER, OK	TALIHINA
FAULKNER, PEGGY	EAST SUMMER SEMINAR, JULY 24-27, 2018	TALIHINA
FENTON, EVA	SUBSTITUTE - EAST, BAIT, HCC	TALIHINA
HAMPTON, MELISSA	BUS DRIVER, MAINTENANCE	TALIHINA
HOWARD, AMY	STA INSTR - SAFETY, CPR	TALIHINA
KING, LESLIE K.	SUBSTITUTE - ALL PROGRAMS	TALIHINA
LAWSON, (WAKEHAM), MYKA	STA INSTR - CPR	TALIHINA
MIKELS, TAMMY J.	STA INSTR - LTCNA, CMA	TALIHINA
PEARCE, FLOYD E.	STA INSTR - SMALL ENGINE REPAIR	TALIHINA
SHARP, JANET	STA INSTR - MEDICAL TERMINOLOGY INSTRUCTOR	TALIHINA
SMALLWOOD, KAREN	SUBSTITUTE - ALL PROGRAMS	TALIHINA
SMITH-MARTIN, VALLAYA	STA INST - HCP TESTING, CLINICAL SKILLS OBSERVER	TALIHINA
TYLER, COURTNEY	FEDERAL WORK STUDY - CLERICAL	TALIHINA

SCHEDULE B

PERSONNEL IN CHARGE/SIGNATURE AUTHORITY IN ABSENCE OF DIRECTOR

ATOKA CAMPUS	
PERSONNEL - IN CHARGE	PERSONNEL – SIGNATURE AUTHORITY
Becky Ward, Student Services Coordinator Jennifer Purcell, Adult Coordinator	Becky Ward, Student Services Coordinator

DURANT CAMPUS	
PERSONNEL – IN CHARGE	PERSONNEL – SIGNATURE AUTHORITY
Vickie Richards, Adult Coordinator _____, Industrial Coordinator Jennifer Davis, Student Services Coordinator	Vickie Richards, Adult Coordinator

HUGO/ANTLERS CAMPUSES	
PERSONNEL – IN CHARGE	PERSONNEL – SIGNATURE AUTHORITY
Dwight Kos, Adult/Industrial Coordinator Christie Hyatt, Adult/Industrial Coordinator Julie Perkins, Counselor	Dwight Kos, Adult/Industrial Coordinator Christie Hyatt, Adult/Industrial Coordinator

IDABEL CAMPUS	
PERSONNEL – IN CHARGE	PERSONNEL – SIGNATURE AUTHORITY
Shelley Ebert, Student Services Coordinator Danny Black, Auto Service Technology Instructor	Shelley Ebert, Student Services Coordinator

McALESTER CAMPUS	
PERSONNEL – IN CHARGE	PERSONNEL – SIGNATURE AUTHORITY
Kellie Cantrell, Student Services Coordinator Shelly Byrd, Counselor Paula Slawson, Adult Coordinator Michelle McNutt, Financial Aid Secretary	Raymond Wilson, Assistant Director

PERSONNEL IN CHARGE/SIGNATURE AUTHORITY IN ABSENCE OF DIRECTOR
(Continued)

POTEAU/SPIRO CAMPUSES	
PERSONNEL – IN CHARGE	PERSONNEL – SIGNATURE AUTHORITY
Charley Hayes, Industrial Coordinator Nina Morgan, Adult Coordinator Marjorie Wann, Counselor Laura Harrison, Student Services Coordinator	Cory Wood, Assistant Director

STIGLER CAMPUS	
PERSONNEL - IN CHARGE	PERSONNEL – SIGNATURE AUTHORITY
Brad Martin, Adult/Industrial Coordinator Twila Hamlin, Student Services Coordinator	Brad Martin, Adult/Industrial Coordinator

TALIHINA CAMPUS	
PERSONNEL – IN CHARGE	PERSONNEL – SIGNATURE AUTHORITY
Joyce Jones, Counselor Courtney Moreland, Adult/Industrial Coordinator	Joyce Jones, Counselor

DESIGNATED SIGNATURE AUTHORITIES – BANK ACCOUNTS
FY 2018-2019

ATOKA CAMPUS	
Jodie S. Dunn, Director Becky Ward, Student Services Coordinator	Jamie Robertson, Secretary

DURANT CAMPUS	
Mike Goodwin, Director Vickie Richards, Adult Coordinator	Monica Wakefield, Secretary

HUGO/ANTLERS CAMPUSES	
HUGO CAMPUS	ANTLERS CAMPUS
Lane Jackson, Director Dwight Kos, Adult/Industrial Coordinator Gloria Rodriguez, Secretary	Lane Jackson, Director Christie Hyatt, Adult/Industrial Coordinator Melinda White, Secretary

IDABEL CAMPUS	
Johnnie Meredith, Director Shelley Ebert, Student Services Coordinator	Donna Parker, Secretary

McALESTER CAMPUS	
Angela Evans, Director Raymond Wilson, Assistant Director	Danielle Hackler, Secretary

POTEAU/SPIRO CAMPUSES	
Michael Culwell, Director Cory Wood, Assistant Director	Kathy Davidson, Secretary

DESIGNATED SIGNATURE AUTHORITIES – BANK ACCOUNTS
FY 2018-2019 – (Continued)

STIGLER CAMPUS	
April Murray, Director Brad Martin, Adult/Industrial Coordinator	Teresa Nance, Secretary

TALIHINA CAMPUS	
Larry Brooks, Director Shannon Daney, Secretary	Joyce Jones, Counselor

DESIGNATED SIGNATURE AUTHORITIES – BANK ACCOUNTS
 FY 2018-2019 – (Continued)

WILBURTON ADMINISTRATIVE OFFICE	
First National Bank, McAlester – BIS Program	
Lois Welch, Chief Financial Officer Stacia McCune, Treasurer	Ronda Peck, Procurement Officer

WILBURTON ADMINISTRATIVE OFFICE	
Latimer State Bank, Wilburton – Checking Account/CD	
Shelley D. Free, Superintendent Lois Welch, Chief Financial Officer	Stacia McCune, Treasurer

WILBURTON ADMINISTRATIVE OFFICE	
Community State Bank, Wilburton, Poteau, Talihina – Operating Account/Federal Flow Thru	
Phil Chitwood, D.V.M., Board President Bobbie Wilson, Board Clerk Shelley D. Free, Superintendent	Lois Welch, Chief Financial Officer Stacia McCune, Treasurer

WILBURTON ADMINISTRATIVE OFFICE	
Community State Bank, Wilburton, Poteau, Talihina – Building Fund	
Phil Chitwood, D.V.M., Board President Bobbie Wilson, Board Clerk Shelley D. Free, Superintendent	Lois Welch, Chief Financial Officer Stacia McCune, Treasurer

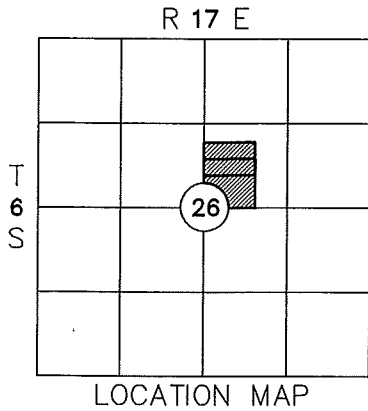
WILBURTON ADMINISTRATIVE OFFICE	
First United Bank, Durant – Money Market and Wealth Management Accounts	
<u>Money Market Account</u> Shelley D. Free, Superintendent Lois Welch, Chief Financial Officer Stacia McCune, Treasurer	<u>Wealth Management Account</u> Shelley D. Free, Superintendent Lois Welch, Chief Financial Officer Stacia McCune, Treasurer

PLAT OF SURVEY

SCHEDULE D

Property of KIAMICHI TECHNOLOGY CENTER

Described as follows:

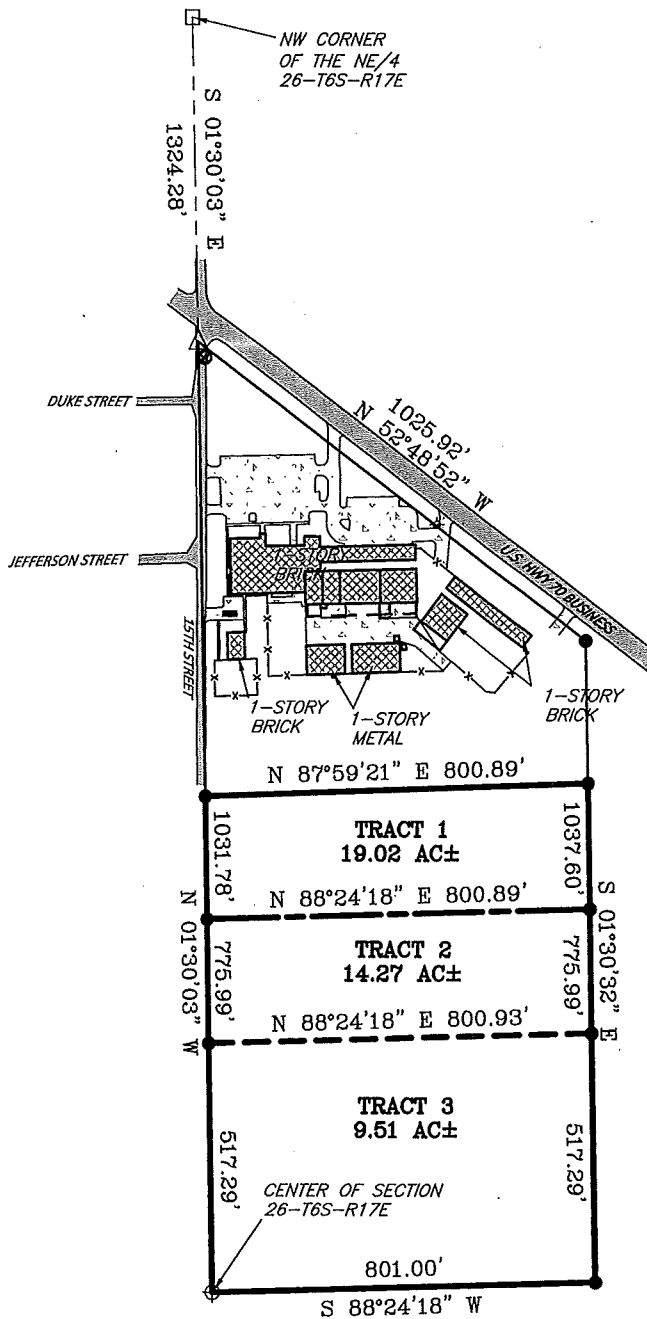
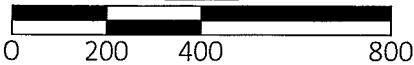


BEARING BASIS
OSPCS-NAD-83

- FOUND RAILROAD SPIKE
- ⊕ FOUND 1/2" IP
- △ FOUND PK NAIL
- SET 1/2" IP W/ID CAP (CLS CA 5072)
- ⊙ WATERMETER
- ⊕ FIRE HYDRANT
- X- EXISTING FENCE
- ▨ CONCRETE
- ▩ ASPHALT

NOTE: THIS SURVEY WAS PERFORMED WITHOUT THE BENEFIT OF A TITLE COMMITMENT AND MAY CONTAIN EASMENTS OR RIGHTS OF WAY NOT SHOWN

SCALE



CERTIFICATE OF SURVEY

I hereby certify that on FEBRUARY 8, 2017, that a survey was made under my supervision of the property described above and that the above plat is a true and correct representation of said survey. I also certify that this plat meets the Oklahoma Minimum Standards for the practice of Land Surveying as adopted by the Oklahoma State Board of Registration for Professional Engineers and Land Surveyors.

T.D. Chappell

T.D. Chappell, Oklahoma Licensed Professional Land Surveyor No. 1673



SURV. BY: TC
DRAWN BY: TC
APPROVED BY: TC

CHAPPELL
LAND SURVEYING, PC

P.O. Box 863, Hugo, OK 74743
(580) 326-6688
Certificate of Authorization No. 5072
Expires June 30, 2018

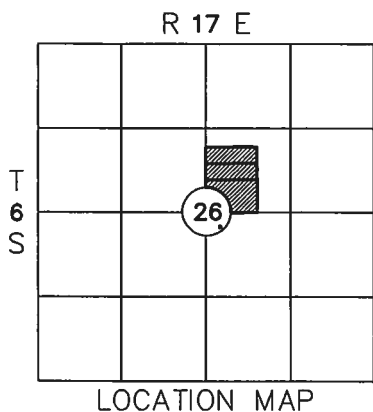
SCALE: 1"=400"
DATE: 2/10/2017
SURVEY #: S126-17
SHEET 1 OF 2

PLAT OF SURVEY

Property of

KIAMICHI TECHNOLOGY CENTER

Described as follows:



BEARING BASIS
OSPCS-NAD-83

TRACT 1

A tract or parcel of land located in the SW/4 of the NE/4, Choctaw County, State of Oklahoma, described as follows, to-wit: BEGINNING at the Southwest Corner of said NE/4, thence N 01°30'03" W, along the West Line of the NE/4, a distance of 1031.78 feet, thence N 87°59'21" E a distance of 800.89 feet, thence S 01°30'32" E a distance of 1037.60 feet, to the South Line of the NE/4, thence S 88°24'18" W, along the South Line of the NE/4, a distance of 801.00 feet, to the POINT OF BEGINNING, containing 19.02 acres, more or less.

TRACT 2

A tract or parcel of land located in the SW/4 of the NE/4, Choctaw County, State of Oklahoma, described as follows, to-wit: BEGINNING at the SW Corner of said NE/4, thence N 01°30'03" W, along the West Line of the NE/4, a distance of 775.99 feet, thence N 88°24'18" E a distance of 800.89 feet, thence S 01°30'32" E a distance of 775.99 feet, to the South Line of the NE/4, thence S 88°24'18" W, along the South Line of the NE/4, a distance of 801.00 feet, to the POINT OF BEGINNING, containing 14.27 acres, more or less.

TRACT 3

A tract or parcel of land located in the SW/4 of the NE/4, Choctaw County, State of Oklahoma, described as follows, to-wit: BEGINNING at the SW Corner of said NE/4, thence N 01°30'03" W, along the West Line of the NE/4, a distance of 517.29 feet, thence N 88°24'18" E a distance of 800.93 feet, thence S 01°30'32" E a distance of 517.29 feet, to the South Line of the NE/4, thence S 88°24'18" W, along the South Line of the NE/4, a distance of 801.00 feet, to the POINT OF BEGINNING, containing 9.51 acres, more or less.

NOTE: THIS SURVEY WAS PERFORMED WITHOUT THE BENEFIT OF A TITLE COMMITMENT AND MAY CONTAIN EASEMENTS OR RIGHTS OF WAY NOT SHOWN

SCALE



CERTIFICATE OF SURVEY

I hereby certify that on FEBRUARY 8, 2017, that a survey was made under my supervision of the property described above and that the above plat is a true and correct representation of said survey. I also certify that this plat meets the Oklahoma Minimum Standards for the practice of Land Surveying as adopted by the Oklahoma State Board of Registration for Professional Engineers and Land Surveyors.

T.D. Chappell

T.D. Chappell, Oklahoma Licensed Professional Land Surveyor No. 1673



SURV. BY:	TC
DRAWN BY:	TC
APPROVED BY:	TC

CHAPPELL
LAND SURVEYING, PC

P.O. Box 863, Hugo, OK 74743
(580) 326-6688
Certificate of Authorization No. 5072
Expires June 30, 2018

SCALE:	1"=400'
DATE:	2/10/2017
SURVEY #:	S126-17
SHEET	2 OF 2